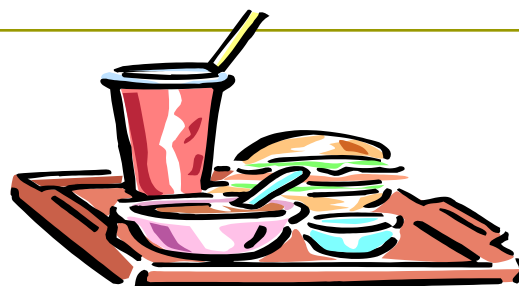


Cafeteria Price List

2014 - 2015

St. Dominic Academy



Hot Pretzel	\$1.25
Churro	\$1.25
Stuffed Cheese Pretzel	\$2.00
Knish	\$2.00
Pizza roll	\$2.25 (2) for \$4.00
Hot dog	\$2.25 (2) for \$4.00
Taco	\$2.50 (2) for \$4.00
Nacho's & cheese	\$3.00
Pizza	\$3.00 - \$3.75
Tater tots	\$3.00
French fries	\$3.00
Onion rings	\$3.00
Jamaican beef patty	\$3.00
Grilled cheese	\$3.50
Rice ball	\$3.50
Hamburger/Cheeseburger	\$3.50
Seasoned curly fries	\$3.50
Bacon, egg & cheese	\$3.50
Potato & egg sub	\$3.50
Frittata	\$3.50
Quiche	\$3.50
Sloppy Joe	\$3.50
B.L.T.	\$3.75
Chicken patty w/cheese	\$3.75
Philly cheese steak sub	\$3.75
Sausage & cheese sub	\$3.75
Salisbury steak	\$3.75
Chili	\$3.75
Pizza bites (7pc)	\$3.75
Mini Tacos (7pc)	\$3.75
Mini Burritos (5pc)	\$3.75
Chicken nuggets (6pc)	\$3.75
Buffalo wings (5pc)	\$3.75
Pizza sticks (2pc)	\$3.75
Popcorn chicken	\$4.00
Hot turkey sandwich	\$4.00
Hot roast beef sandwich	\$4.00
French Dip sub	\$4.00
Meatball hero	\$4.00
Chicken parm	\$4.00
Sausage/ peppers & onions	\$4.00
Quesadillas	\$4.00
Eggplant Parm	\$4.00
Fried chicken (2pc)	\$4.00
Mozzarella sticks (5pc)	\$4.00
Chicken tenders (3pc)	\$4.00

Lunch Combo Specials

Served with fries, onion rings, vegetable, rice, potato, side salad or fruit of the day.

Combo #1 \$4.75

Choose any lunch entree \$3.25 or under with a side.

Combo #2 \$5.00

Choose any lunch entree @ \$3.50 with a side.

Combo #3 \$5.25

Choose any lunch entree @ \$3.75 with a side.

Combo #4 \$5.50

Choose any lunch entree @ \$4.00 with a side.

Pasta	\$3.75-	\$4.50
Ravioli		\$4.00
Stuffed shells		\$4.00
Baked ziti		\$4.00
Mac & Cheese		\$4.00
Gyro		\$4.00
Turkey BLT wrap		\$4.00
Hero cuts		\$4.00
Panini		\$4.00
Burrito (chicken, beef, vegetable) w/rice & beans		\$4.00
Chicken cutlet, mozzarella & bruschetta sub		\$4.00
Wraps		\$4.00
Grilled wraps		\$4.00

(Popcorn chicken, Chicken parm, Broccoli, Grilled chicken, Philly cheese steak, Meatball, Sausage)